

SANIPROOF

liquid

One-product-solution for the waterproofing prior to tiling in bathrooms/wetrooms.

Saniproof Liquid coating dries to a flexible membrane with high crackbridging properties.

Application with roller, paintbrush or airless spraygun.

No corner reinforcements needed.



PRODUCTDESCRIPTION

- » Polymer based coating which, after application, dries to a flexible membrane with high crack bridging properties, for the waterproofing of concrete and cement based surfaces in showers, bathrooms, steam areas, wet rooms that need waterproofing prior to tiling.
- » Apply Saniproof Liquid with an airless paintspray machine, roller or paintbrush.
- » No corner reinforcements needed

SUITABLE SUBSTRATES(*)

- » Concrete and bricks;
- » Cement based plaster, waterresistant boards;
- » Existing tile floors and walls.

Substrates suitable for wetrooms.

APPLICATION

PRIOR TO STARTING THE APPLICATION

- » Ensure the surfaces to be sealed are dust free. Remove loose or flaking material, surface efflorescence and standing water and all other kinds of pollutions that may affect adhesion. When applying on cement based surfaces, these must be dry and solid.
- » Ensure surfaces on which Saniproof Liquid will be applied are hydrophobic or suitable for application of a waterborn coating.
- » Surfaces on which Saniproof Liquid will be applied must be completely closed: therefore use a cement based mortar to close all gaps, joints, or a fast set gypsum plaster for small repairs. Prepare the substrate as for a paint job.
- » Applying on existing tile floors is possible, providing they are well adhering and roughened prior to application of saniproof liquid. Porous substrates will be primed first with Primer 43. The joints floor/wall be closed.
- » Any joints between mineral substrates and steel/inox/plastic (like ducts,...), shall be sealed with a waterresistant flexible sealant to bridge the joint.
- » Temperature during application and during: > 5°C.
- » Mix before use for homogenisation.

SANIPROOF

liquid

- » Product is ready-to-use. Do not add water or solvents.
- » Apply with an airless paint-spray device, roller or paintbrush.

APPLICATION METHOD

» STEP 1 – connections

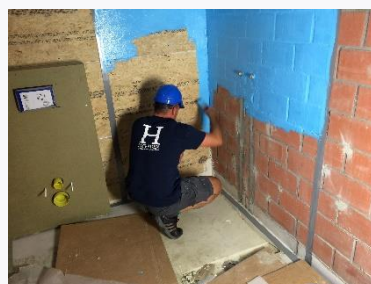
Fill the joints between the surface, and the draining and tubes, with a paintable waterproof sealant. When these joints are < 5mm, enlarge these before applying the sealant.



» STEP 2 – Apply Saniproof Liquid

Apply Saniproof liquid with a longhaired roller, paintbrush or airless paintspray machine in two coats.

- Coverage in 2 layers is minimal 800gr/m², or 2 layers of approx. 400 gr/m² depending on the roughness of the substrate.
- Second layer to be applied crosswise on the first layer, when the first layer has dried out.
- Check for complete coverage



» STEP 3 – Finishing by tiling

When the second layer of Saniproof Liquid has dried out (24 to 48 hours after application), apply tiling as finishing. Suitable tiling glues: cementglue class C2 or dispersion glue class D2TE, according EN12004.

POINTS OF ATTENTION

- » Avoid any contact with water or other liquids during the drying phase of Saniproof Liquid.
- » Clean equipment after use with cold water.
- » Protect Saniproof against damages until tiling is applied.
- » Ensure ventilation in case of high humidity.
- » Do not apply Saniproof Liquid:
 - On bitumen or asphalt containing surfaces;
 - On surfaces with continuous water contact or water pressure;
 - To cover moving cracks.
 - On surfaces not suitable for application of waterborn coatings.









CARACTERISTICS

- » Blue liquid
- » Density (kg/litre): 1,2. (ind.).
- » Solids: 60% (ind.)
- » Total minimum consumption: 0,8 kg/m² (depending on substrate)

SANIPROOF

liquid

- » pH: 9,0.
- » Elongation (DIN 53504) (%): >250.
- » VOC: < 5ppm.
- » BBRI testreports

TESTING INSTITUTE	TEST	NORM	VALUE
 bbri.be	Adhesion to red brick Porotherm	ISO4624 (2016)	1,6 N/mm ²
 bbri.be	Adhesion to concrete brick	ISO4624 (2016)	1,4 N/mm ²
 bbri.be	Adhesion on sand cement screed	ISO4624 (2016)	1,3 N/mm ²
 bbri.be	Adhesion on concrete tile	ISO4624 (2016)	1,6 N/mm ²
 bbri.be	Adhesion on Ytong brick	ISO4624 (2016)	1,0 N/mm ²
 bbri.be	Watertightness	NBN EN 14891par. A7	Waterdicht
 bbri.be	Waterabsorption	NBN EN 14891par. A7	2,14 g à 5,27 g (norm <20g)
 wtcb.be	Crackbridging	NBN EN 14891	> 3,5 mm (gem.)

PACKAGING

Pails 6 kg ; pallet: 64 x 6 kg
Pails 20kg: pallet: 18 x 20kg

CONSERVATION

12 months; original packaging.
Stock > 5°C and away from direct sunlight.

SAFETY

Consult the safety data sheet prior to application. Always work in well-ventilated areas. Avoid skin contact when product is in wet condition.

DATE OF THIS EDITION: 30/05/2019

Our general conditions of sale apply. This document does not have a contractual value. This technical data sheet replaces and annuls the previous edition. The information given in this sheet has the purpose to inform and advice you. Hevadex bvba reserve the right to amend or change this information without notice. All information is given in good faith and without any warranty. The application, use and processing of these products are beyond our control and therefore the entire responsibility of the user/client/applicator. The user of the product must test the product's suitability and apply for the intended purpose. Established liability if any for any reason is always limited to the value of the goods supplied by HEVADEX bvba. The products and systems are manufactured under total quality management. HEVADEX bvba reserves the right to change the properties of its products. Users must always refer to the most recent issue of the local Product Data Sheet, copies of which will be supplied on request.